

flat out versatile.

Print Vibrant UV inks, Clear Coat and White on virtually any media





Product displays

Outdoor signs

Indoor signs

Print unmatched color and texture on roll media or board stocks up to a half-inch thick.



Unsurpassed Media Compatibility

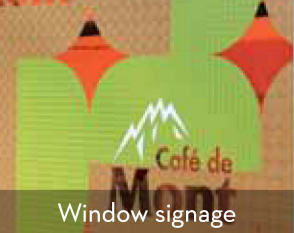
VersaUV supports printing on BOPP, PE, PET film, offset printing stock and more. The low heat UV LED lamps allow printing on heat-sensitive media such as shrink wrap, pressure sensitive media and paper stocks with no risk of damaging the substrate. The LEJ-640 also enables printing on rigid media such as corrugated cardboard for folding cartons, polycarbonate sheets for membrane switch applications and Fome-Cor® or Gatorfoam® for POP and exhibit walls.

ECO-UV Ink plus White and Clear Coat

The LEJ-640 prints ECO-UV inks in CMYK + White + Clear. ECO-UV ink adheres to a wide range of treated and untreated substrates with exceptional color gamut, offering superior scratch and chemical resistance, plus outdoor durability of up to two years when Clear is applied. Clear ink adds remarkable special effects ranging from matte and gloss finishes to custom textures and even Braille. The Roland Texture Library provides 72 different texture fills.

Roland's unique automated Ink Circulation System circulates the white ink in the LEJ-640 every eight hours to prevent the settling of pigments in the lines. In addition, this system controls the discharge of white ink and minimizes waste by monitoring the white ink usage and the types of jobs that are printed.





Window signage



Exterior POP



Membrane panels



Short-run labels

Stunning printing and embossing effects on roll media or board stocks up to a half-inch thick and 64 inches wide.

Please, don't call it a flatbed. Yes, our new VersaUV LEJ-640 hybrid printer will handle virtually any 4' x 8' substrate up to a half-inch thick, including Fome-Cor®, Gatorfoam® and corrugated cardboard with ease. But that's just part of the story. Vibrant UV inks deliver superior images. White ink allows you to print text and graphics that stand out on a variety of clear and colored media. Layers of clear coat finish your graphics with custom patterns and embossing effects, perfect for premium brands.

Now with just one device, you can explore a world of applications, from packaging prototypes and POP to wide-format signage, décor, exhibits and window displays. With everything the LEJ-640 delivers, "flat" doesn't begin to do it justice.

"We've really pushed the limits, and the VersaUV has handled whatever we've thrown at it. We've printed everything from small candy pouches on foils to point-of-purchase displays on solid bleached sulfate (SBS) board, all with great results."

Rob Torres, Director of Digital Media, White Graphics, Downers Grove, Illinois



POPs & Signage

Print on rigid substrates up to 1/2-inch thick.



Proofing & Prototypes

Print on production substrates. Simulate emboss and varnish.



VERSAUV LEJ-640 UV HYBRID FLATBED INKJET PRINTER

- 64" hybrid UV-LED inkjet printer
- Front and rear folding tables support rigid materials up to a half-inch thick including 4'x 8' sheets weighing up to 26 lbs.
- Roll-to-roll mechanism for handling roll media
- Automated media take-up system facilitates precision unattended printing when using roll media
- Automated sensor technology detects improper media thickness setting and avoids head strikes
- ECO-UV inks available in three configurations:
 - > CMYK+White+Clear
 - > CMYK+White+White
 - > CMYK+Clear+Clear
- Layered clear coat produces unique textures and finishes including matte and gloss varnish and embossing effects
- Choose from hundreds of media options including synthetic papers, BOPP, PE, PET film, corrugated cardboard, Gatorfoam®, Fome-Cor®, and more
- Includes VersaWorks™ RIP Software
- Maximum 1440x1440 dpi image quality for fine quality and tiny text
- Print speeds up to 133 sqft./hr.
- Patent-pending automated Ink Circulation System
- Safe, long-lasting and low-heat LED lamps
- Lowest power consumption in its class
- 1-Year Trouble-Free Warranty*



PRODUCT SPECIFICATIONS

For detailed features and specifications, visit www.rolanddg-ae.com

Model		LEJ-640
Printing method		Piezoelectric inkjet / Grit roller feed
Acceptable media	Width	Roll media: 8.3 to 64 in. (210 to 1625 mm) / Rigid or cut sheet: 9.9 to 64 in. (250 to 1625 mm)
	Thickness	Roll media: Maximum 39 mil (1.0 mm) with liner / Rigid or cut sheet: 0.51 in. (13 mm)
	Weight	Roll media: Maximum 88 lb. (40 kg) / Rigid or cut sheet: Maximum 26 lb. (12 kg)
	Roll outer diameter Core diameter	Maximum 8.3 in. (210 mm) 3 in (76.2mm) / 2 in (50.8mm) with optional flanges
Media take-up system		Maximum 8.3 in (210 mm) outer diameter / Maximum 88 lb. (40 kg) weight
Printing width		Maximum 63.6 in (1615 mm)
Maximum Printing Speed		133 sqft/hr in CMYK High Speed mode
Ink cartridges	Type	ECO-UV**
	Capacity Color Configuration	220 ml (± 5 ml) 6 colors (Cyan, Magenta, Yellow, Black, White, Gloss) CMYK+White+Clear, CMYK+White+White or CMYK+Clear+Clear
Ink curing unit	Type	ECO-UV S**
	Capacity Color Configuration	220 ml (± 5 ml) 5 colors (Cyan, Magenta, Yellow, Black, White) CMYK+White+White
Ink curing unit		Dual UV LED Lamps
Printing resolutions		360x720 dpi, 720x1080 dpi, 720x1440 dpi, 1440x1440 dpi
Distance accuracy		Error of less than ± 0.3 % of distance traveled, or ± 0.012 in (0.3 mm), whichever is greater.
Interface		Ethernet (10 BASE-T / 100 BASE-TX, automatic switching)
Power-saving function		Automatic sleep feature
Power supply	Voltage and frequency	AC 100 to 240 V ± 10%, 50/60 Hz
	Required power capacity	Maximum 5.7 A
Power consumption	During operation	Maximum 500W
	Sleep mode	Approx. 15.2 W
Dimensions (with stand)		Without table unit : 126[W]x33[D]x51[H] in (3184[W]x836[D]x1281[H] mm) / With table unit: 126[W]x145[D]x51[H] in (3184[W]x3658[D]x1281[H] mm)
Weight (with stand)		Without table unit: 530 lb. (240 kg) / With table unit: 697 lb. (316 kg)
Environment	Power on	Temperature: 68° to 90°F (20° to 32°C) (72°F [22°C] or more recommended) / Humidity: 35 to 80% (no condensation)
	Power off	Temperature: 41° to 104°F (5° to 40°C) / Humidity: 20 to 80% (no condensation)
Included items		Stand, power cord, media clamps, replacement blade for sheet cutter, cleaning kit, Roland VersaWorks software RIP, User's manual, etc.

Get social with us.



FOR MORE INFORMATION OR TO FIND A DEALER NEAR YOU, CALL +971 4 4405 400 OR VISIT WWW.ROLANDDG-AE.COM | EMIRATES COMPUTERS CO. L.L.C. | P.O. BOX 60983 | TAMEEM HOUSE | 10TH FLOOR | BARSHA HEIGHTS | DUBAI | UNITED ARAB EMIRATES | FAX: +971 4 4472 372

