

Roland®

TrueVIS VG2 Series

Large-Format Inkjet Printer/Cutters

BUILT TO EXCEED YOUR NEEDS



TURN UP THE DIAL ON ACCURACY, EFFICIENCY AND PERFORMANCE

Engineered to exceed the needs of today's most demanding professionals, the TrueVIS VG2 offers new ink and color modes for detailed color reproduction, smart new automatic pinch rollers, 3M and Avery certification, and other features to maximize quality and productivity. Available in 54" and 64" models, it's everything you could ever want in a printer/cutter and a whole lot more.



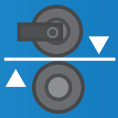
Orange Process Color Options

Hit specific oranges and reds with around 130 new spot colors available in the new Roland Color Library.



True Rich Color

Elevate all your print output and improve reproduction of specific brand colors with True Rich Color. It combines neutral grays, smooth gradations, and natural skin tones to produce color quality of incomparable realism and complexity.



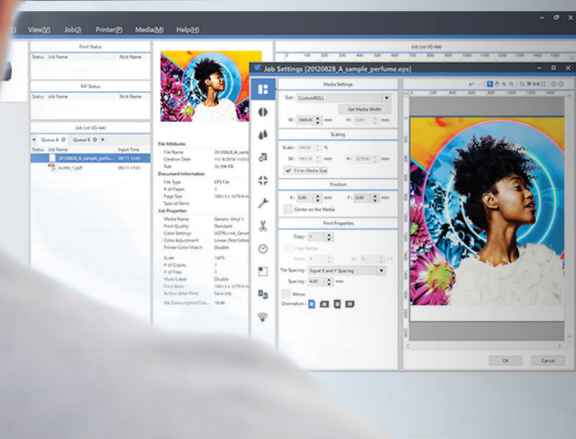
Automatic Pinch Rollers

Center rollers raise during cutting operation to avoid contact with printed graphics, while outer pinch rollers improve cut accuracy by keeping different types of media steady with adjustable pressure settings.



New Cutting Features

Simplified new Crop Mark by Row functions improve accuracy on long runs of labels, heat transfers and decals while PerfCut Mode allows you to print, cut, and die-cut in a few easy clicks.



Included VersaWorks 6 RIP Software

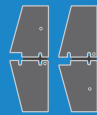
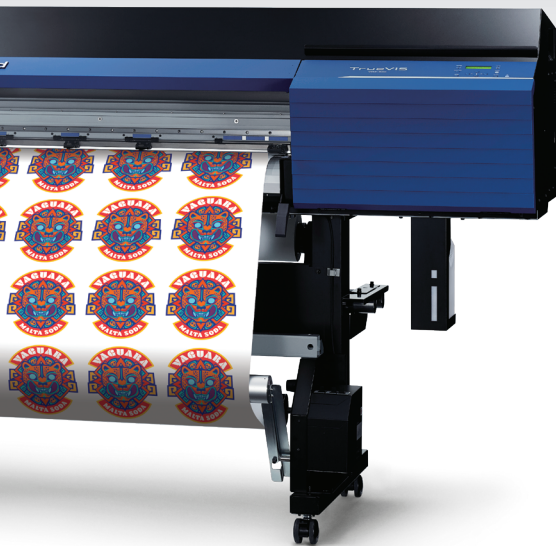
Effortlessly manage your print output with the latest edition of the world's most popular wide-format print RIP software. In addition to all the cropping, tiling, nesting, color libraries and other popular features, it includes improved speed and file handling, five print queues and hot folders with unlimited queue settings, and new color matching features to replicate color output between Roland devices.



Ink Certification to Assure High-Standards

In addition to meeting strict environmental standards for indoor safety, global print material providers, 3M and Avery Dennison are now offering warranty coverage for graphics printed with the VG2 and TR2 ink.*

*To maintain eligibility, it is essential to comply with the 3M™ MCS™ Warranty and Avery Dennison™ ICS™ Warranty Program. These warranties cover printing onto their respective products with standard TR2 inks.



New Media Clamps

Smart new media clamps with integrated grooves no longer interfere with sheet-cutting or need to be removed at any time—providing a more efficient operation.



Media Handling Options

An included TU4 take-up system offers two modes to expertly handle everything from thin films to heavy canvas materials.



Nozzle Mask Function

If a nozzle on the printhead is clogged and misfiring, you can minimize printer downtime by turning off a specific nozzle band to allow continued production.



Smart Machine

Bluetooth enabled Roland DG Mobile Panel allows you to test print, clean and troubleshoot your VG2 from your tablet or smartphone.

Print/cut thousands of labels and decals in one print job with non-skew precision, speed and ease.



Produce vehicle wrap graphics with outstanding color quality and long-lasting results.



Produce everything from wall art to backlit displays to heat transfer graphics with amazing versatility.





TrueVIS VG2 Series

Large-Format Inkjet Printer/Cutters

| Specifications | | VG2-640 | VG2-540 |
|--|---------------------|--|---|
| Printing technology | | Piezoelectric inkjet FlexFire Printheads | |
| Media | Width | 12.4 to 64 in. (315 to 1,625 mm) | 10.8 to 54 in. (275 to 1,371 mm) |
| | Thickness | Max. 39 mil (1.0 mm) with liner, for printing Max. 16 mil (0.4 mm) with liner and 9 mil (0.22 mm) without liner, for cutting | |
| | Roll outer diameter | Max. 8.3 in. (210 mm) | |
| | Roll weight | Max. 88 lb. (40 kg) | Max. 66 lb. (30 kg) |
| | Core diameter | 3 in. (76.2 mm) or 2 in. (50.8 mm) | |
| Printing/cutting width | | Max. 63 in. (1,600 mm) | Max. 53 in. (1,346 mm) |
| Ink | Types | TR2 ink 500 ml pouch (only white 250 ml) | |
| | Colors | 4 colors (Cyan, Magenta, Yellow, Black) 8 colors (Cyan, Magenta, Yellow, Black, Light Cyan, Light Magenta, Light Black, and White) 8 colors (Cyan, Magenta, Yellow, Black, Light Cyan, Light Magenta, Light Black, and Orange) | |
| Printing resolution (dots per inch) | | Max. 1200 dpi | |
| Cutting Speed | | 0.4 to 11.8 in/s (10 to 300 mm/s) | |
| Blade force | | 30 to 500 gf | |
| Blade | Type | Roland CAMM-1 series blade | |
| | Offset | 0.0 to 59.1 mil (0.000 to 1.500 mm) | |
| Software resolution (when cutting) | | 0.98 mil/step (0.025 mm/step) | |
| Distance accuracy (when printing) | | Error of less than $\pm 0.3\%$ of distance traveled or ± 11.8 mil (± 0.3 mm), whichever is greater | |
| Distance accuracy (when cutting) | | Error of less than $\pm 0.4\%$ of distance traveled or ± 11.8 mil (± 0.3 mm), whichever is greater When distance correction has been performed (when the setting for [CUTTING MENU]-[CALIBRATION] has been made): Error of less than $\pm 0.2\%$ of distance traveled or ± 3.9 mil (± 0.1 mm), whichever is greater | |
| Repeatability (when cutting) | | ± 3.9 mil (± 0.1 mm) or less | |
| Alignment accuracy for printing and cutting | | ± 19.7 mil (± 0.5 mm) or less | |
| Alignment accuracy for printing and cutting when reloading media | | Error of less than $\pm 0.5\%$ of distance traveled, or ± 0.2 in. (± 3 mm), whichever is greater | |
| Media heating system | | Print heater set temperature: 86 to 112°F (30 to 45°C) Dryer set temperature: 86 to 122°F (30 to 50°C) | |
| Connectivity | | Ethernet (100BASE-TX/1000BASE-T, automatic switching) | |
| Power-saving function | | Automatic sleep feature | |
| Power requirements | | AC 100 to 120 V $\pm 10\%$, 8.0 A, 50/60 Hz or AC 220 to 240 V $\pm 10\%$, 4.1 A, 50/60 Hz | |
| Power consumption | During operation | Approx. 1,090 W | |
| | Sleep mode | Approx. 40 W | |
| Acoustic noise level | During operation | 63 dB (A) or less | |
| | During standby | 53 dB (A) or less | |
| Dimensions (with stand) | | 116 [W] \times 28.8 [D] \times 51.6 [H] in. (2,945 [W] \times 730 [D] \times 1,310 [H] mm) | 105.8 [W] \times 28.8 [D] \times 51.6 [H] in. (2,685 [W] \times 730 [D] \times 1,310 [H] mm) |
| Weight (with stand) | | 451.9 lb. (204 kg) | 421 lb. (188 kg) |
| Environment | Power on | Temperature: 68 to 90°F (20 to 32°C), humidity: 35 to 80%RH (no condensation) | |
| | Power off | Temperature: 41 to 104°F (5 to 40°C), Humidity: 20 to 80%RH (no condensation) | |
| Included items | | Dedicated stands, power cord, media clamps, media holders, replacement blade for separating knife, manuals, etc. | |

For more details on product specifications, visit rolanddga.com/VG2



Roland's Industry-Leading Warranty and Support

For over 30 years, Roland DG has provided the most advanced and reliable machines, backed by unmatched customer service and technical support.

TrueVIS VG2 Series printer/cutters are also supplied with a One-Year Trouble-Free Warranty* to give you added peace-of-mind and machine support.

For detailed features and specifications, visit www.rolanddg-ae.com

Get social with us.



FOR MORE INFORMATION OR TO FIND A DEALER NEAR YOU, CALL +971 4 4405 400 OR VISIT WWW.ROLANDDG-AE.COM | EMIRATES COMPUTERS CO. L.L.C. | P.O. BOX 60983 | TAMEEM HOUSE | 10TH FLOOR | BARSHA HEIGHTS | DUBAI | UNITED ARAB EMIRATES | FAX: +971 4 4472 372

