



ZC-4D Collet Replacement Instructions

DWX-50 / DWX-4 / DWX-51D / DWX-52D /
DWX-52DC / DWX-52DCi



Items Used in This Procedure

Included items		Main unit accessories	
Collet (1)	Grease (1)	Wrench (1)*	Detection pin (1)

*A spanner of either shape is attached to the main unit.

Replacement

⚠ WARNING

Be sure to securely fasten the collet. After securing it in place, make sure no wrenches or other articles have inadvertently been left behind. If you do not check for these articles, they may be thrown from the machine with force, posing a risk of injury.

⚠ CAUTION

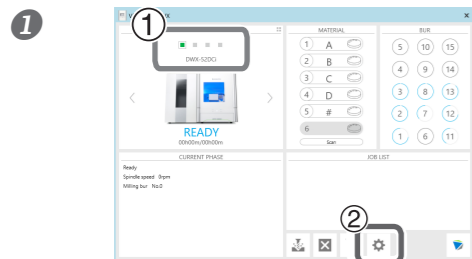
Do not touch the spindle unit or the surrounding areas immediately after milling has ended. Doing so may result in burns.

⚠ CAUTION

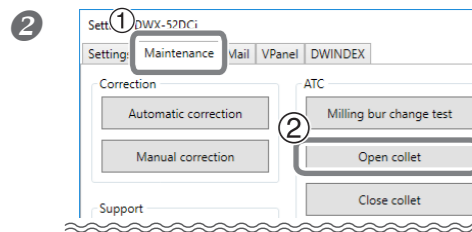
Be sure to remove the milling tool and the workpiece before performing maintenance. Contact with the blade may result in injury.

* Figures may appear differently depending on the model. (Figures in this manual are of DWX-52DCi products.)

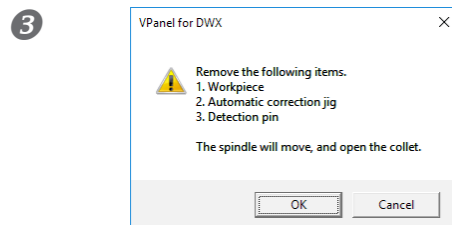
1. Remove the collet.



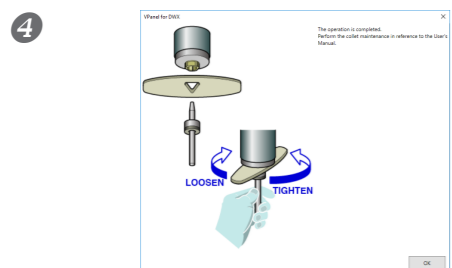
① In the top window of VPanel, select the machine to operate. When you have connected multiple machines, you can switch between the machines by clicking under MACHINE STATUS.
② Display VPanel, and then click [Settings]. The [Settings] window will appear.



① Click the [Maintenance] tab
② Click [Open collet].



Click [OK].
The collet will open. (Depending on the model, the spindle may move.)



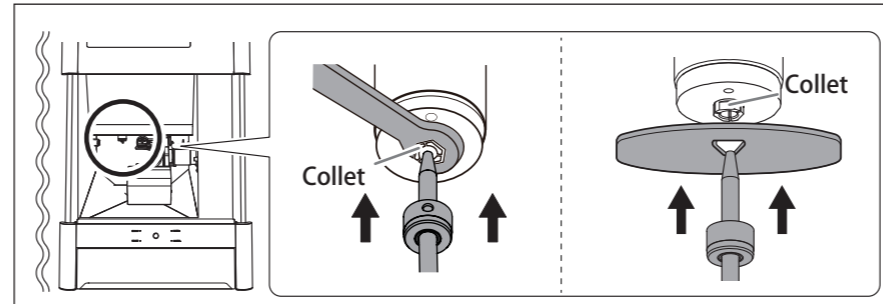
Click [OK].

⑤ Open the front cover.

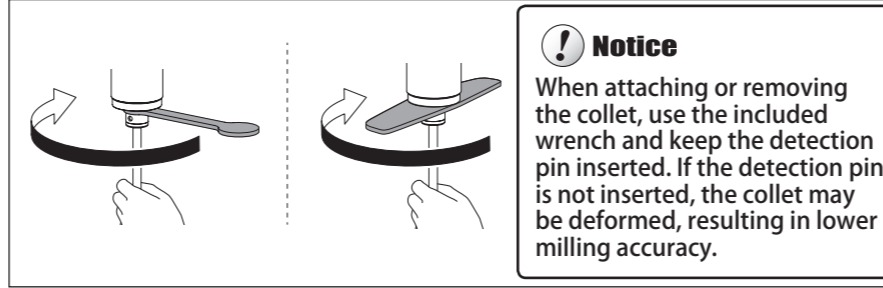
⑥ ① Fit the wrench onto the collet.
② Insert the detection pin into the collet.

If the detection pin cannot be inserted, try repeating the operation in step ① to ④

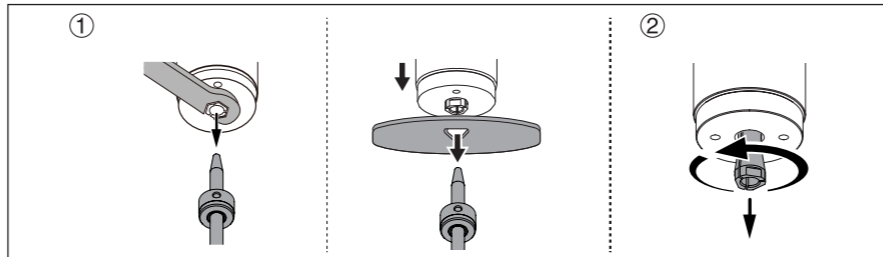
Refer to the same illustration procedure as the shape of the spanner attached to the main unit.



⑦ Loosen the collet with the wrench while holding the detection pin with your hand.

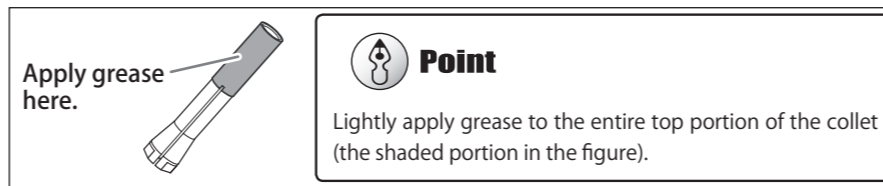


⑧ ① Remove the detection pin and the wrench.
② Turn the collet in the direction of the arrows to remove it.

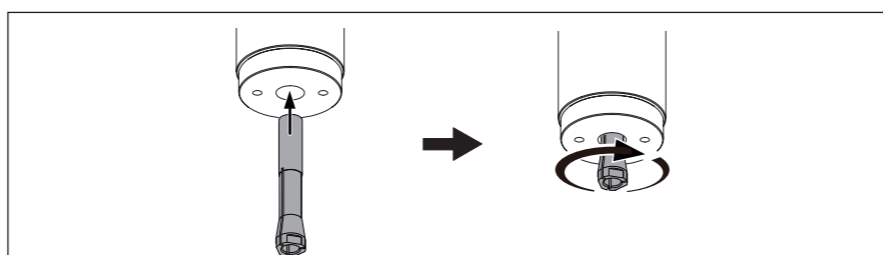


2. Attach the collet.

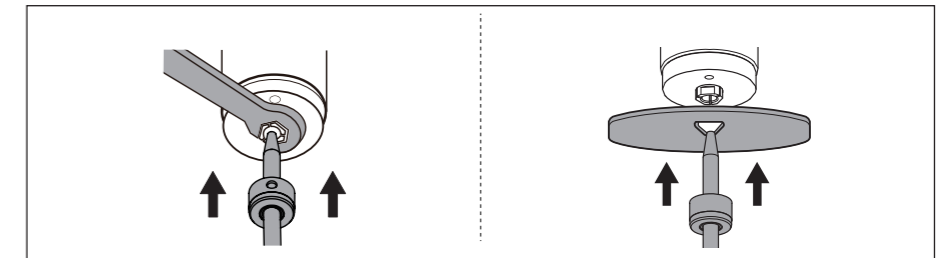
① Lightly apply grease to the collet for replacement.



② Insert the collet, and then turn it in the direction of the arrows to attach it. Do not tighten the collet firmly when attaching it.

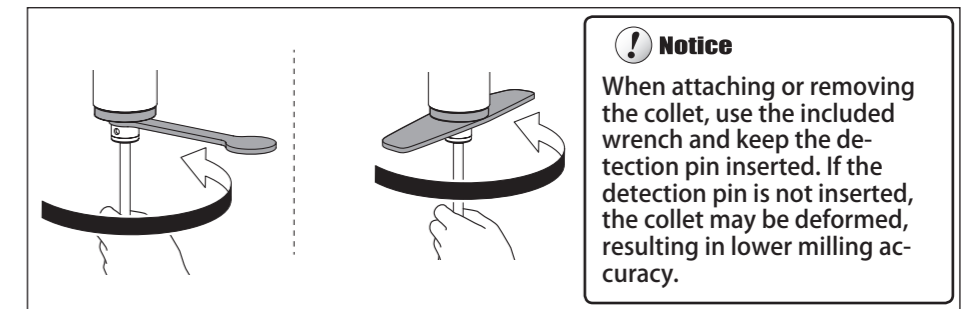


③ ① Fit the wrench onto the collet.
② Insert the detection pin into the collet.



④ Tighten the collet with the wrench while holding the detection pin with your hand.

Tightening is sufficient once the wrench and the tip of the spindle unit (the shaded portion in the figure shown below) begin to rotate together.



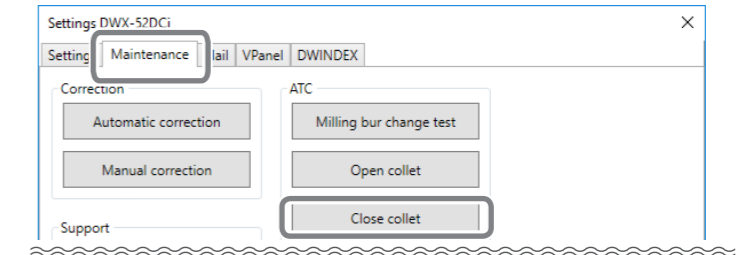
⑤ Remove the detection pin and the wrench, and then close the front cover.

⑥ Close the collet.

① Display VPanel, and then click [Settings].

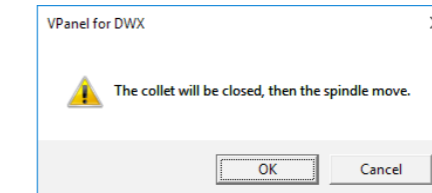
The [Settings] window will appear.

② Click the [Maintenance] tab, and then click [Close collet].



⑦ Click [OK].

The collet will close. (Depending on the model, the spindle unit may move.)



The procedure is complete if the spindle unit moves and "The operation is completed." is displayed.

3. Perform automatic correction.

Follow the instructions in the manual included with the machine to perform automatic correction. Replacement of the collet is finished once automatic correction is complete.

Company names and product names are trademarks or registered trademarks of their respective holders.

Copyright © 2015-2018 Roland DG Corporation
Copyright © 2018 DGSHAPE Corporation

R3-180110

<http://www.dgshape.com/>