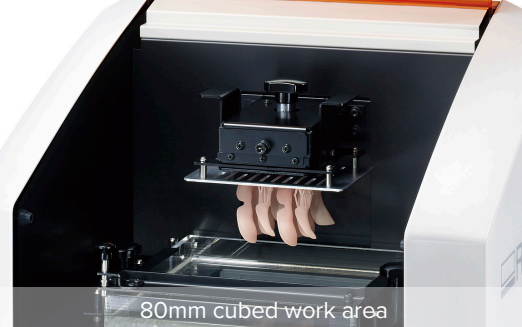


## EASE MEETS PRECISION

At the touch-of-a-button, print dental prostheses including custom trays, base plates and frameworks. Combined with new QuickDenta 3D software, creating high-precision dental prostheses has never been easier or more accessible.

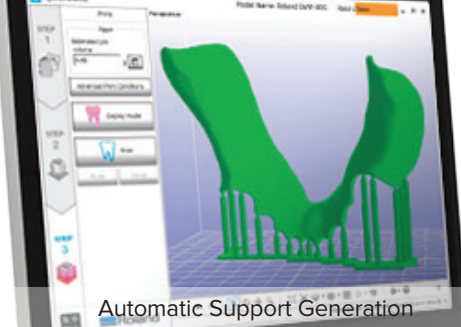




80mm cubed work area



Specialty Formulated Resins



Automatic Support Generation

## Highlights & Specifications

- Touch-button 3D printing of dental prostheses such as custom trays, base plates and partial denture perfactory frameworks
- An 80mm cubed work area is ideal for producing multiple prints at once
- Configure printing in three simple steps via an easy-to-follow workflow wizard
- Specially formulated resins including Class I and Class II biocompatible materials
- UV curing with proprietary Dual Projection Lens produces strong and accurate prints
- Includes Quick Denta 3D software for easy, intuitive dental prostheses production
  - > Automatically positions and generates support points for simplified set-up and printing
  - > Included 3D mesh healing feature automatically detects and corrects rendering errors during file import
  - > Calculates the exact amount of resin for cost-effective job estimation

3D printing process		Layered projection system
Build size		3.15 (W) x 3.15 (D) x 3.15 (H) in. (80 (W) x 80 (D) x 80 (H) mm)
Light source		UV-LED (Ultraviolet light-emitting diode)
Power supply	Machine	DC 24 V, 0.8 A
	Dedicated AC adapter	AC 100 to 240V $\pm$ 10%, 50 \ 60 Hz
Power consumption		20 W
External dimensions		16.93 (W) x 14.37 (D) x 17.72 (H) in. (430 (W) x 365 (D) x 450 (H) mm)
Weight		53 lb. (24 kg)
Interface		USB
Operating system (OS)		Windows® 10, 8.1, 7 (32-bit / 64-bit versions) (64-bit version recommended)
CPU		Intel® Core i5 or better CPU (Core i7 or higher recommended)
Memory		4 GB of memory or more (8 GB of memory or more recommended)
Optical drive		CD-ROM drive
Video card and monitor		1,280x1,024 pixels or more
Free hard-disk space required for installation		100 MB or more

For detailed features and specifications, visit [www.rolanddg-ae.com](http://www.rolanddg-ae.com)



### Peace-of-Mind Reliability and Machine Quality

Made in Japan with meticulous build quality and in accordance with the highest clinical standards, the DWP-80S dental 3D printer gives you peace-of-mind machine reliability. Backed by a 1-year warranty and unmatched post sales service and technical support, DGSHPA by Roland ensures that your machine is always up-and-running.

Get social with us.



FOR MORE INFORMATION OR TO FIND A DEALER NEAR YOU, CALL +971 4 4405 400 OR VISIT [WWW.ROLANDDG-AE.COM](http://WWW.ROLANDDG-AE.COM) | EMIRATES COMPUTERS CO. L.L.C. | P.O. BOX 60983 | TAMEEM HOUSE | 10TH FLOOR | BARSHA HEIGHTS | DUBAI | UNITED ARAB EMIRATES | FAX: +971 4 4472 372

